







**210**  
NORTH  
CARPENTER

**Elevated Office.**

210 North Carpenter is a 12-story, 200,000 square foot boutique office building in the heart of Fulton Market. Designed by Solomon Cordwell Buenz, the new construction building is ideal for users looking to elevate their brand, attract an urban workforce and experience Fulton Market to the fullest.



- Globex Corp
- Initech
- Hooli Corp
- Vehement Capital
- Massive Dynamic

Artist's conceptual rendering





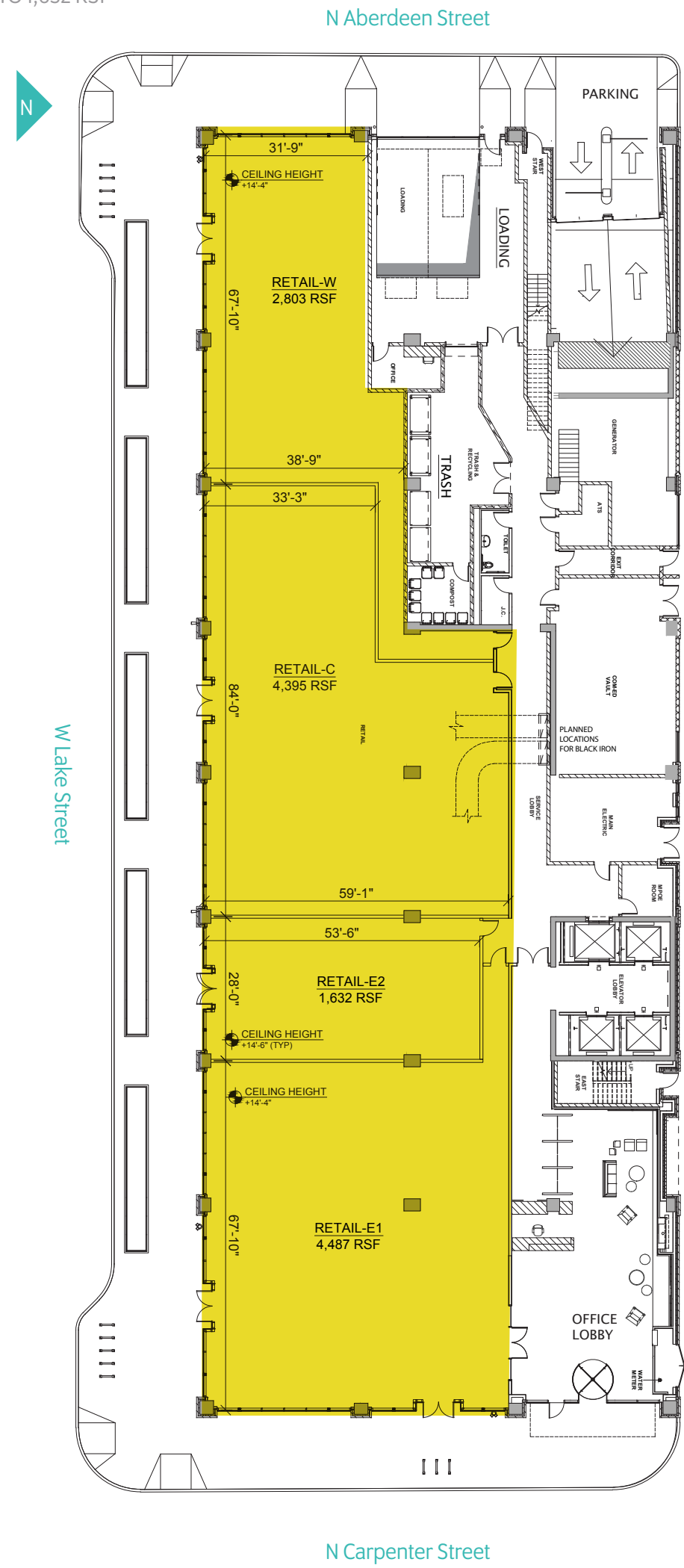
Carpenter Street lobby  
Artist's conceptual rendering





## GROUND FLOOR RETAIL

13,318 RSF DIVISIBLE TO 1,632 RSF





**210**  
NORTH  
CARPENTER

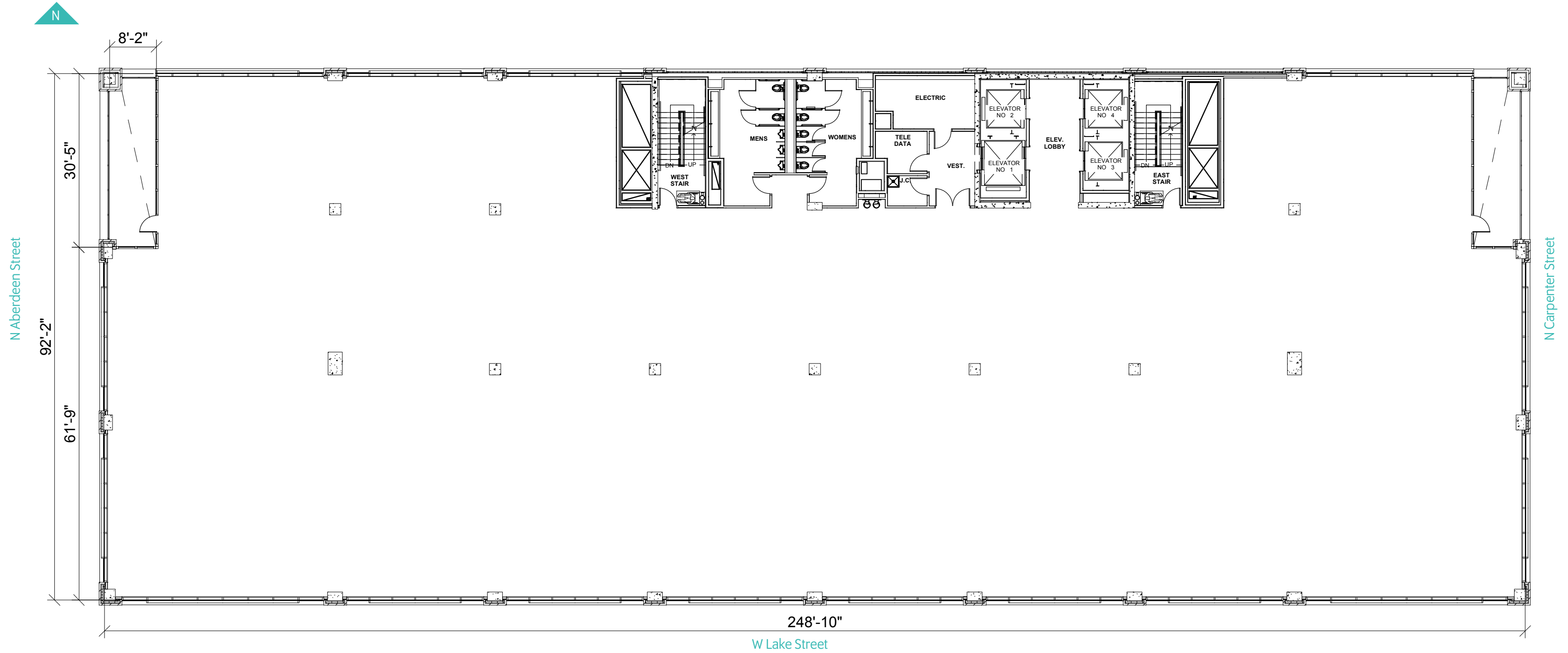
Just steps from the Morgan and Lake 'L' station, 210 North Carpenter will offer tenants one of the most comprehensive amenity packages on the market, including a rooftop lap pool, tenant lounge and gaming area, full service fitness center and locker rooms, a programmed yoga room, conference facilities, on-site parking for over 40 cars and much more.





# FOURTH-EIGHTH FLOORS

23,737 SF + 450 SF OUTDOOR TERRACE





**210**  
NORTH  
CARPENTER

**Elevated Amenities.**

The tenant amenity package at 210 North Carpenter is unmatched in the market and will include:

- Sky deck overlooking the city
- Rooftop lap pool
- Tenant lounge and gaming area
- Full service fitness center and locker rooms
- Programmed yoga room
- Conference facilities
- Secure bike room
- 24-hour security
- Indoor parking for over 40 cars
- Concierge service
- Press Box dry cleaning
- Over 13,000 square feet of on-site retail





Artist's conceptual rendering

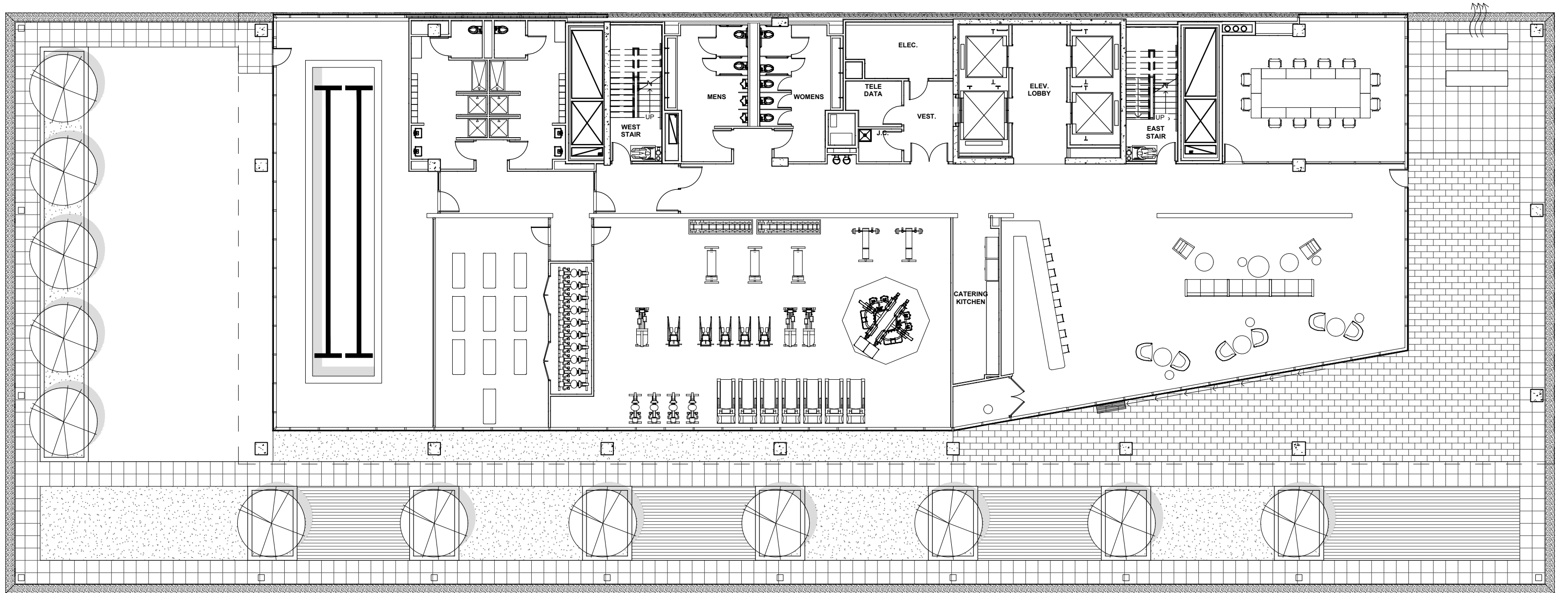


# TENTH FLOOR AMENITIES

6,629 SF +10,884 SF OUTDOOR TERRACE



N Aberdeen Street



N Carpenter Street

W Lake Street



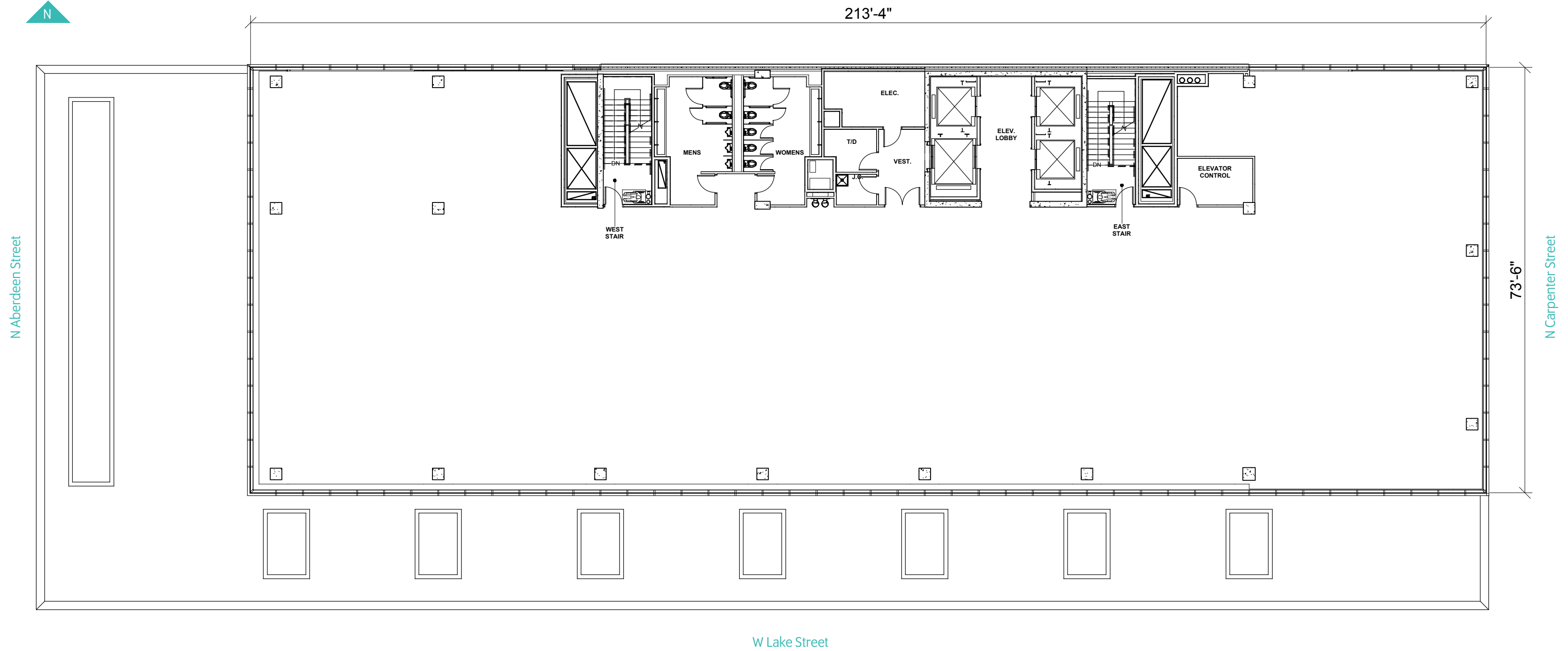


Artist's conceptual rendering



# ELEVENTH FLOOR

15,985 SF







Artist's conceptual rendering

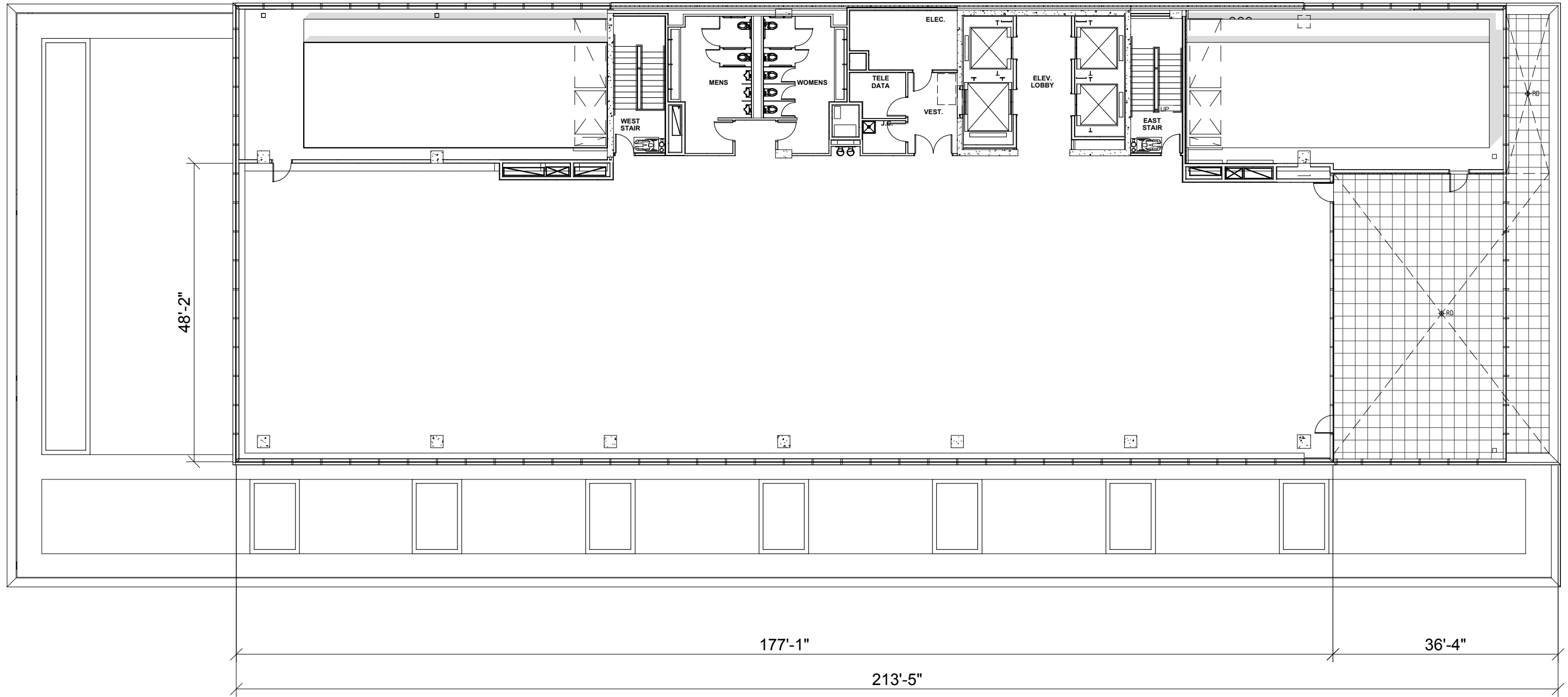


# TWELFTH FLOOR

10,952 SF + 1,156 SF OUTDOOR TERRACE



N Aberdeen Street



N Carpenter Street

W Lake Street



**210**  
NORTH  
CARPENTER

Flexible 23,000 square foot floor plates will be fully customizable for any type of user. Whether the savviest tech firm or the edgiest law firm, 210 North Carpenter is where you will elevate your brand, elevate your culture and elevate your work life.



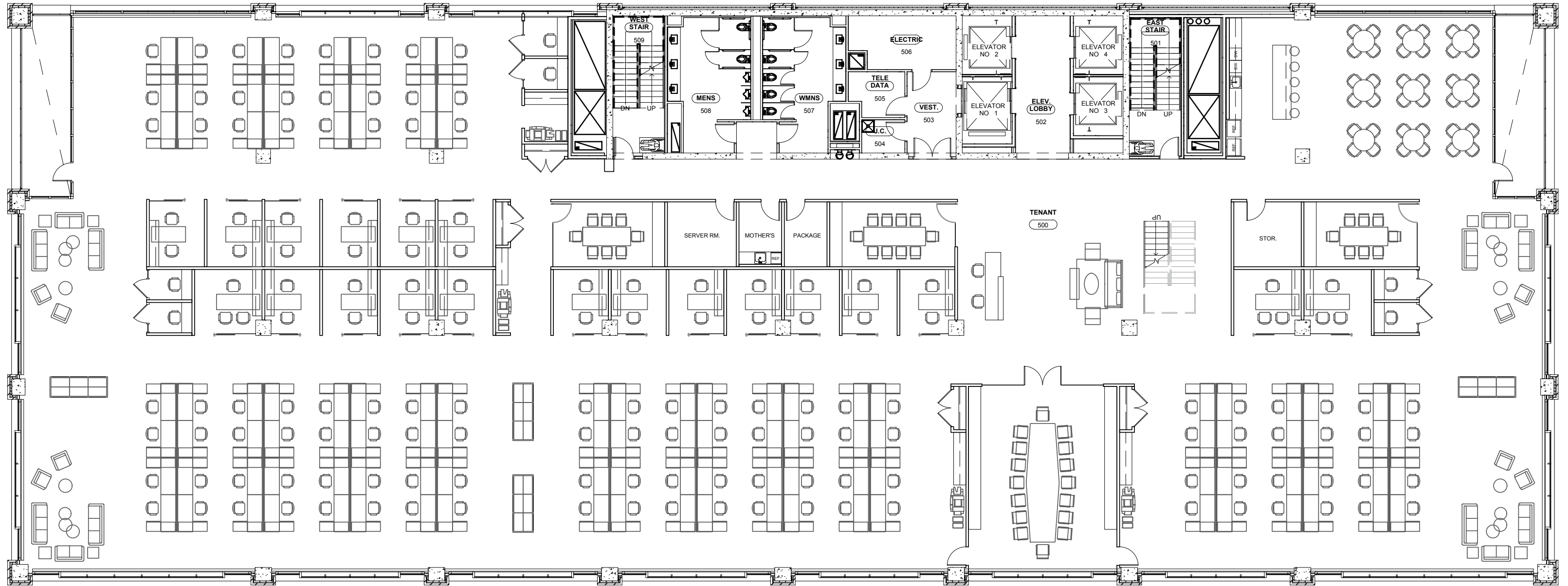


# TEST FIT

23,353 SF + 450 SF OUTDOOR TERRACE



N Aberdeen Street



N Carpenter Street

W Lake Street





Artist's conceptual rendering



FOR OFFICE LEASING INFORMATION, PLEASE CONTACT  
**OFFICE@STERLINGBAY.COM**  
312.202.3478

FOR RETAIL LEASING INFORMATION, PLEASE CONTACT  
**RETAIL@STERLINGBAY.COM**  
312.202.3483

**210northcarpenter.com**



ALL INFORMATION AND DEPICTIONS CONTAINED HEREIN REMAIN SUBJECT TO CHANGE. 8/17



